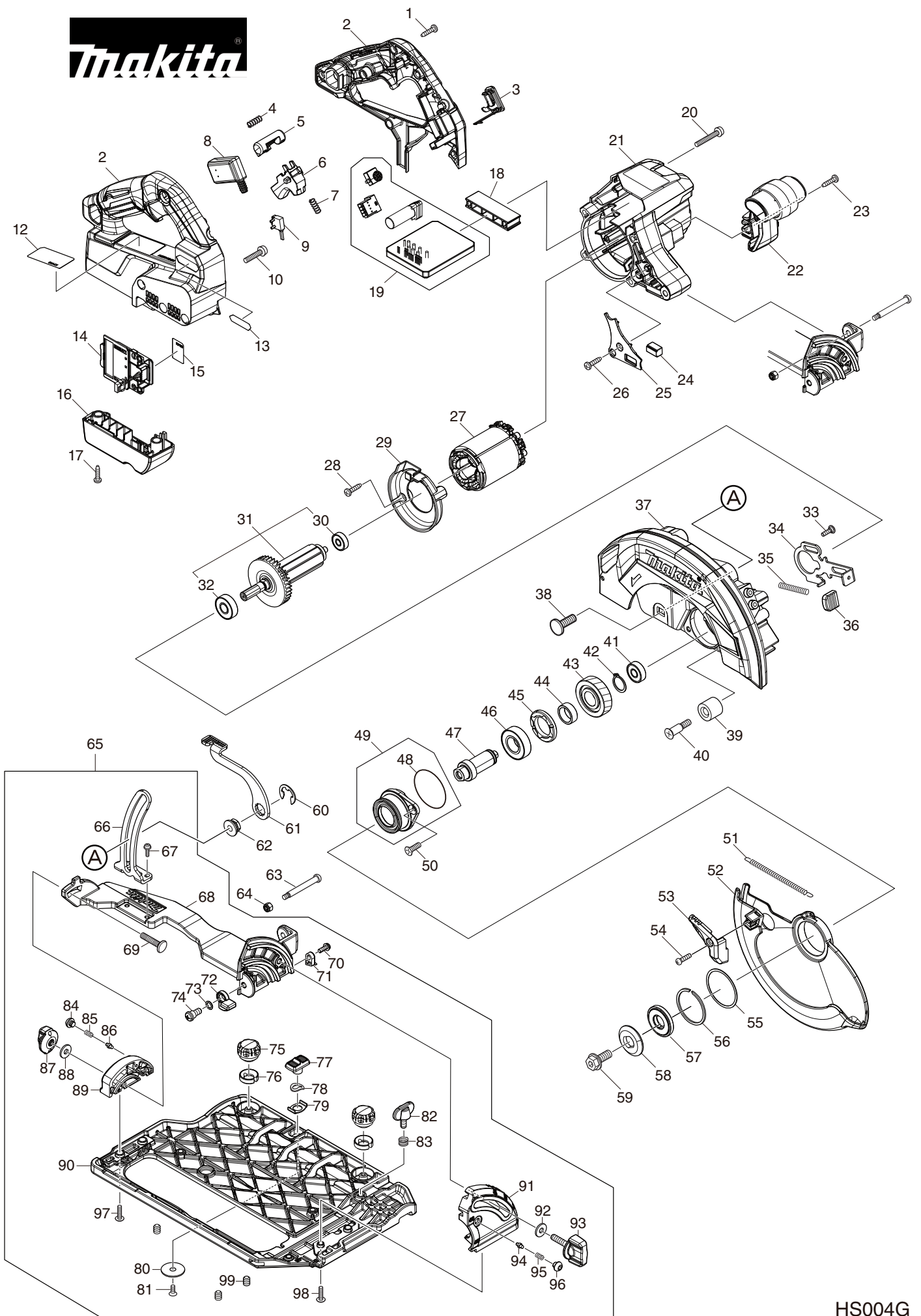


Makita



HS004G

Item No.	Type	Sub	Part No.	Description	Qty	Unit
001			266326-2	TAPPING SCREW 4X18	6	PC.
002			183R18-5	HANDLE SET	1	SET
		INC.	263005-3	RUBBER PIN 6	1	PC.
		INC.	8012U5-0	CAUTION LABEL	1	PC.
003			140F99-0	CAP COMPLETE	1	PC.
		INC.	213218-6	O RING 16	1	PC.
		INC.	818H07-8	CAP LABEL	1	PC.
004			231433-0	COMPRESSION SPRING 4	1	PC.
005			419704-7	LOCK OFF BUTTON	1	PC.
006			458594-3	SWITCH LEVER	1	PC.
007			231433-0	COMPRESSION SPRING 4	1	PC.
008			651083-9	SWITCH C3XA-1PSPM	1	PC.
009			632M92-5	SWITCH UNIT	1	PC.
010			911243-8	PAN HEAD SCREW M5X25	3	PC.
012			857E51-2	HS004G NAME PLATE	1	PC.
013			8012U4-2	XGT LOGO LABEL	1	PC.
014			632P65-6	TERMINAL UNIT	1	PC.
015			857E58-8	HS004G SERIAL NO. LABEL	1	PC.
016			140S46-9	TERMINAL HOUSING COMPLETE	1	PC.
		INC.	263005-3	RUBBER PIN 6	1	PC.
017			266326-2	TAPPING SCREW 4X18	2	PC.
018			412480-2	SPACER	1	PC.
019			620D01-2	CONTROLLER	1	PC.
020			911258-5	PAN HEAD SCREW M5X35	4	PC.
021			140U69-9	MOTOR HOUSING COMPLETE	1	PC.
		INC.	8012U6-8	CAUTION LABEL	1	PC.
022			458750-5	FRONT GRIP	1	PC.
023			266326-2	TAPPING SCREW 4X18	1	PC.
024			620936-3	LED CIRCUIT	1	PC.
025			458751-3	LIGHT COVER	1	PC.
026			266326-2	TAPPING SCREW 4X18	1	PC.
027			629479-2	STATOR	1	PC.
028			266326-2	TAPPING SCREW 4X18	2	PC.
029			458749-0	BAFFLE PLATE	1	PC.
030			210022-4	BALL BEARING 626DDW	1	PC.
031			519534-7	ROTOR ASSY	1	PC.
		INC.		Item No. 30,32		
032			210059-1	BALL BEARING 6000DDW	1	PC.
033			251529-1	+ PAN HEAD SCREW M4X14	1	PC.
034			347676-5	SHAFT LOCK	1	PC.
035			233084-5	COMPRESSION SPRING 6	1	PC.
036			286039-9	CAP	1	PC.
037			140S41-9	BLADE CASE COMPLETE	1	PC.
		INC.	213434-0	O RING 26	1	PC.
		INC.	263005-3	RUBBER PIN 6	1	PC.
		INC.	818C47-6	SCALE LABEL	1	PC.
038			266396-1	FLATHEAD SQUARENECKBOLT M8X24	1	PC.
039			262185-2	RUBBER SLEEVE8	1	PC.
040			251572-0	+ COUNTERSUNK HEAD SCREW M6X30	1	PC.
041			210029-0	BALL BEARING 608ZZ	1	PC.
042			961057-5	RETAINING RING S-17	1	PC.
043			226838-7	HELICAL GEAR 37	1	PC.
044			257451-0	RING 17	1	PC.
045			285809-3	BEARING RETAINER 23-36	1	PC.
046			210301-0	BALL BEARING 6003DDW	1	PC.
047			327192-3	SPINDLE	1	PC.
048			213565-5	O RING 42	1	PC.
049			136021-7	BEARING BOX ASSY	1	PC.
		INC.		Item No. 48		
050			265034-2	+ COUNTERSUNK HEAD SCREW M5X16	2	PC.
051			232467-6	TENSION SPRING 4	1	PC.

Item No.	Type	Sub	Part No.	Description	Qty	Unit
052			319970-5	SAFETY COVER	1	PC.
053			271450-8	LEVER 37	1	PC.
054			265178-8	PAN HEAD SCREW M4X16	1	PC.
055			267337-0	FLAT WASHER 40	1	PC.
056			257452-8	RETAINING RING (EXT) WR-40	1	PC.
057			224594-3	INNER FLANGE 35	1	PC.
058			224409-4	OUTER FLANGE 35	1	PC.
059			266283-4	HEX. SOCKET HEX. BOLT M8X20	1	PC.
060			257953-6	BOW STOP RING E-12	1	PC.
061			271460-5	LEVER 90	1	PC.
062			252262-8	COLLERED HEX. NUT M8	1	PC.
063			265118-6	+ PAN HEAD SCREW M5	1	PC.
064			252103-8	HEX. LOCK NUT M5-8	1	PC.
065			136280-3	BASE ASSY	1	PC.
		INC.		Item No. 66-99		
066			347532-9	DEPTH GUIDE	1	PC.
067			911516-9	PAN HEAD SCREW M4X12	2	PC.
068			319975-5	FRAME	1	PC.
069			251920-3	CAP SQUARE NECK BOLT M6X30	1	PC.
070			911118-1	PAN HEAD SCREW M4X12	1	PC.
071			419632-6	POSITION PLATE	1	PC.
072			319978-9	STOPPER	1	PC.
073			213026-5	O RING 7	1	PC.
074			251267-5	+ PAN HEAD SCREW M6	1	PC.
075			265775-0	THUMB SCREW M4X3	2	PC.
076			419627-9	HOLDER	2	PC.
077			458092-7	SLIDE LEVER	1	PC.
078			253932-2	WAVE WASHER 10	1	PC.
079			345977-5	PLATE	1	PC.
080			345748-0	LOCK WASHER	1	PC.
081			912112-6	COUNTERSUNK HEAD SCREW M4X10	1	PC.
082			265701-9	THUMB SCREW M6X14	1	PC.
083			233376-2	COMPRESSION SPRING 8	1	PC.
084			266559-9	H.S.BUTTON HEAD BOLT M6X4	1	PC.
085			231234-6	COMPRESSION SPRING 3.5	1	PC.
086			263041-9	SHOULDER PIN 3-5	1	PC.
087			252270-9	THUMB NUT M6	1	PC.
088			253111-2	FLAT WASHER 6	1	PC.
089			319977-1	REAR ANGULAR PLATE	1	PC.
090			319974-7	BASE	1	PC.
091			319976-3	FRONT ANGULAR PLATE	1	PC.
092			253111-2	FLAT WASHER 6	1	PC.
093			265776-8	THUMB SCREW M6X26	1	PC.
094			263041-9	SHOULDER PIN 3-5	1	PC.
095			231234-6	COMPRESSION SPRING 3.5	1	PC.
096			266559-9	H.S.BUTTON HEAD BOLT M6X4	1	PC.
097			265174-6	+ TRUSS HEAD SCREW M4X16	2	PC.
098			265174-6	+ TRUSS HEAD SCREW M4X16	2	PC.
099			266225-8	H.S.SET SCREW(FLAT POINT)M6X8	3	PC.
ACCESSORIES				- Visit www.makita.ca for more accessories information -		
A01			196520-1	DUST NOZZLE SET	1	PC.
A02			B-61656	7-1/4" CT BLADE 24T 5/8"	1	PC.
A03			783204-6	HEX. WRENCH 6	1	PC.
A04			412393-7	BATTERY COVER F/ XGT LI-ION	1	PC.
A05			191E81-6	40V MAX LI-ION BATTERY BL4040	1	PC.
			191E74-3	40V MAX LI-ION BATTERY BL4025	1	PC.
A06			DC40RA	FAST CHARGER DC40RA	1	PC.
A14			164095-8	GUIDE RULE	1	PC.
A15			199386-8	HANG HOOK SET	1	PC.
		INC.	127013-7	HOOK (N/A individually)	1	PC.
		INC.	911228-4	PAN HEAD SCREW M5X18	2	PC.
A16			199140-0	GUIDE RAIL 1000MM	1	PC.

Item No.	Type	Sub	Part No.	Description	Qty	Unit
A17			194368-5	GUIDE RAIL 1400MM	1	PC.
A18			199141-8	GUIDE RAIL 1500MM	1	PC.
A19			194925-9	GUIDE RAIL 1900MM	1	PC.
A20			194367-7	GUIDE RAIL 3000 SET	1	SET
A21			194385-5	CLAMP SET, 2/SE FOR GUIDE RAIL	1	SET
A22			198885-7	GUIDE RAIL CONNECTORS	1	PC.
A23			196664-7	BEVEL GUIDE SET	1	SET